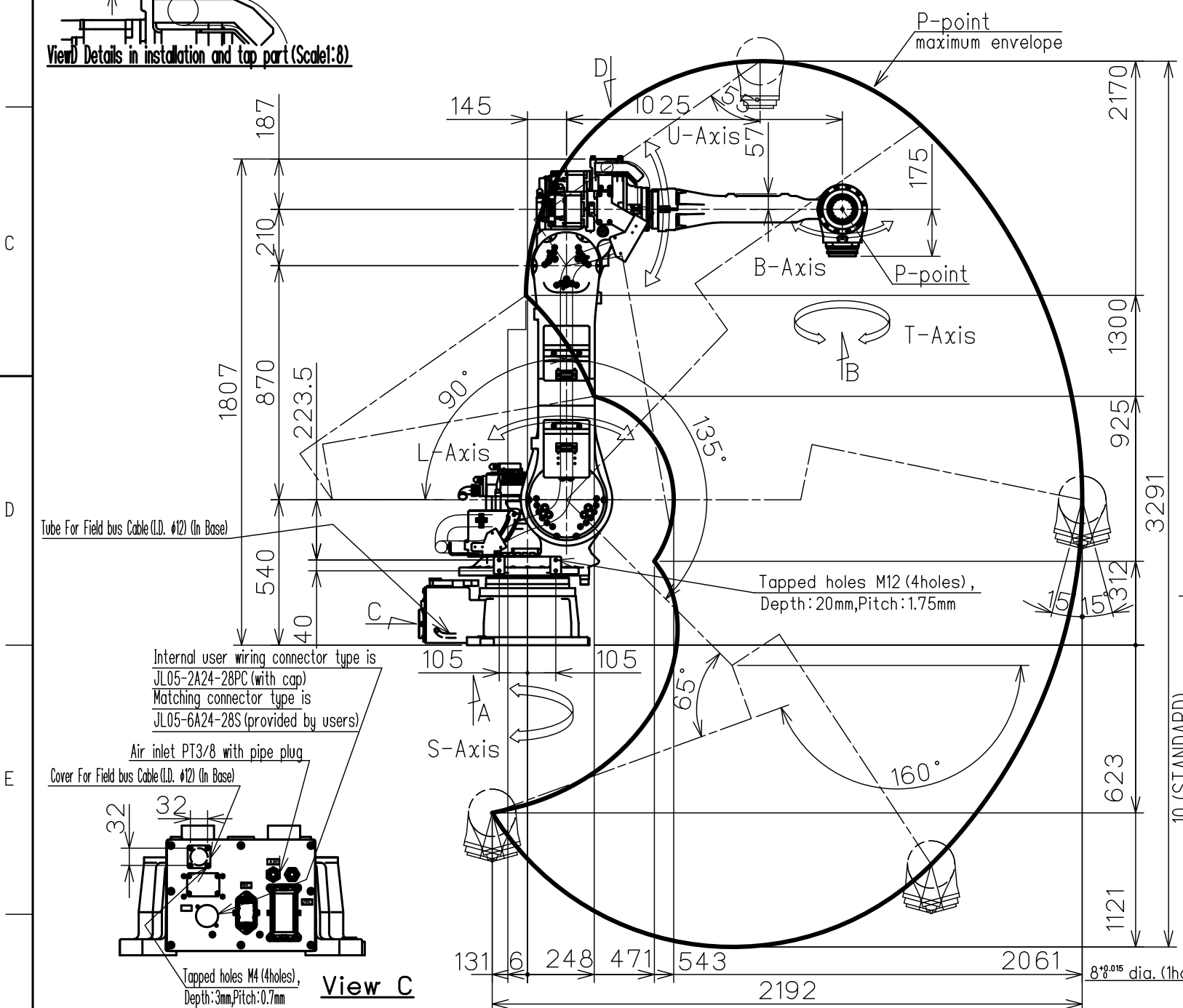
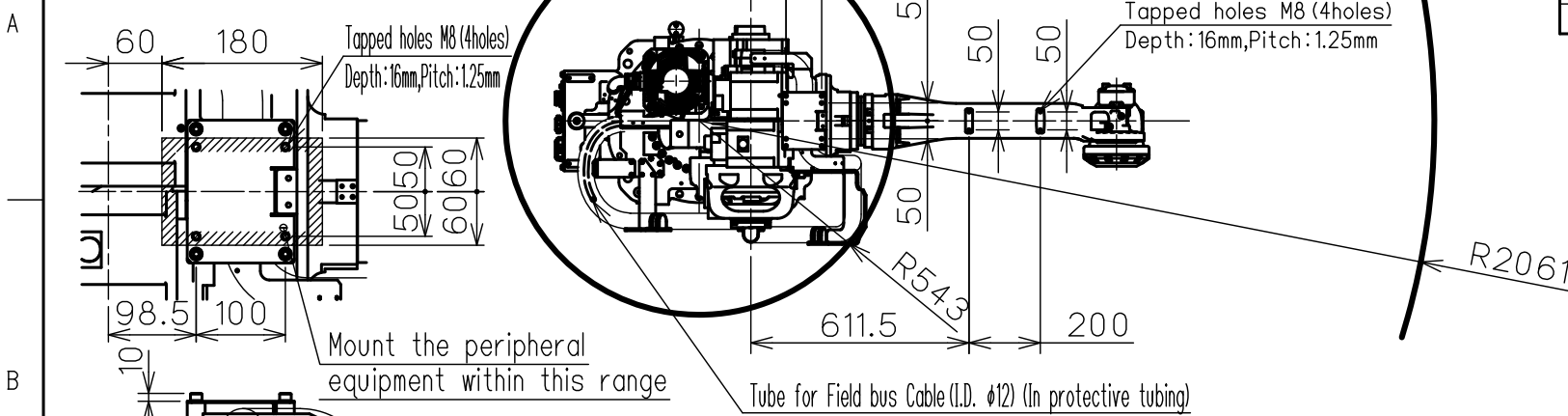
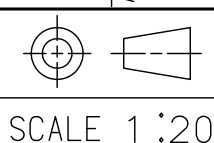


DWG.NO. HW1383413



Note:
1. All rights reserved.
2. Please note that the data is subject to be deleted without advance notice.
3. No warranty is given in relation to the data including the specification.
4. We are not responsible for any damages or loss caused by the use of the data.



YASKAWA
株式会社 安川電機

Reference Drawing

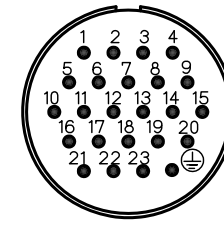
TITLE MOTOMAN-MPL80II
DIMENSION DIAGRAM

DWG.NO. HW1383413

FOR STUDY PURPOSE ONLY

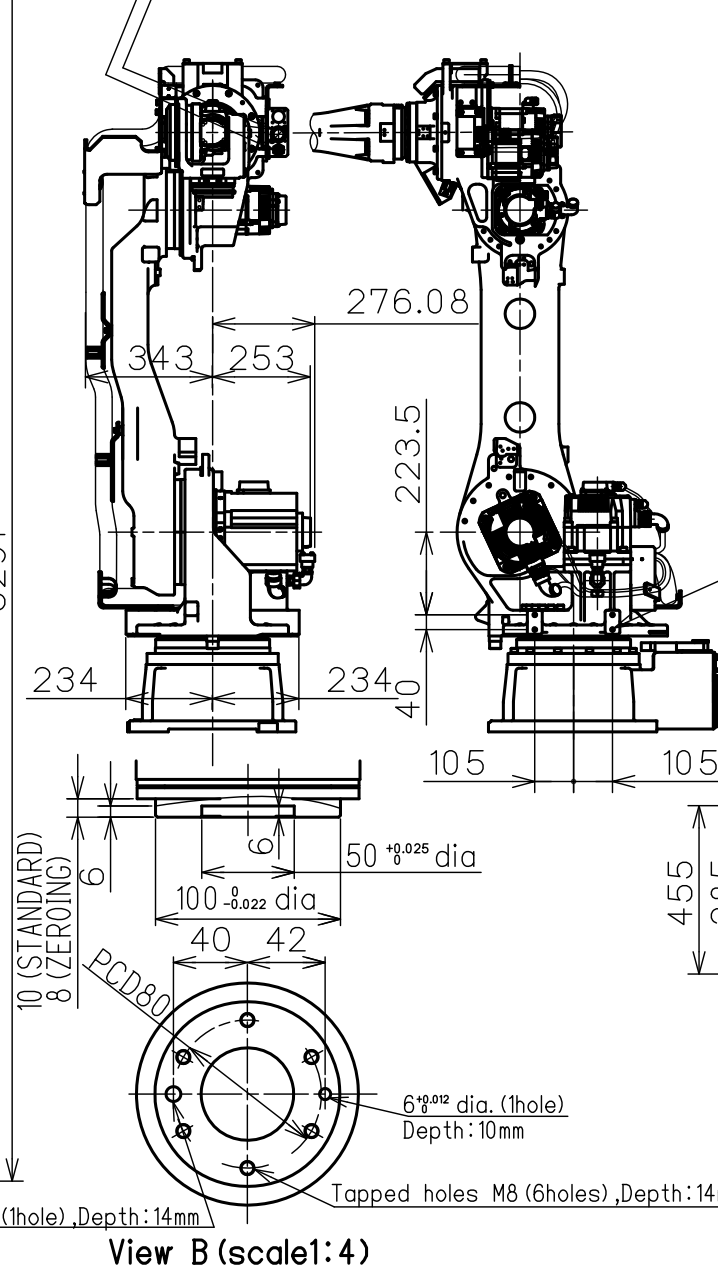
Type	Note
YR-MPL0080-J00	Standard

Pins used



Detail of Reserved Cable Connector

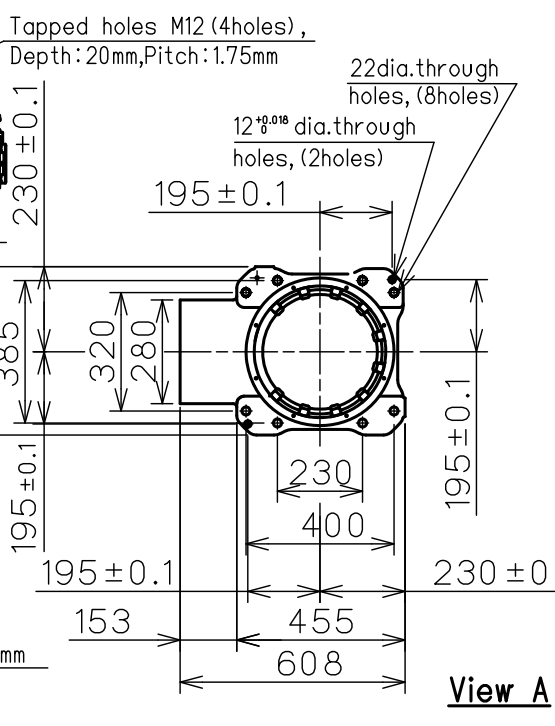
Air exhaust PT3/8 with pipe plug
Internal user wiring connector type is JL05-2A24-28SC (with cap)
Matching connector type is JL05-6A24-28P (Provided by users)



View B (scale: 1:4)

Item	Model	MOTOMAN-MPL80II
Configuration		Articulated Robot
Degree of Freedom		5
Payload		80 kg
Repeatability		±0.07mm
Range of Motion	S-Axis	-180° - +180°
	L-Axis	-90° - +135°
	U-Axis	-160° - +35°
	B-Axis	-15° - +15°*注1
	T-Axis	-360° - +360°
Max Speed	S-Axis	2.97rad/s, 170°/s
	L-Axis	2.97rad/s, 170°/s
	U-Axis	2.97rad/s, 170°/s
	B-Axis	2.97rad/s, 170°/s
	T-Axis	6.11rad/s, 350°/s
Allowable Moment	B-Axis	78.4N·m (8kgf·m)
	T-Axis	20.5N·m (2.1kgf·m)
Allowable Inertia (GD²/4)	B-Axis	16kg·m²
	T-Axis	6.1kg·m²
Approx. Robot mass		550kg
Ambient Conditions	Temperature	0~+45°C
	Humidity	20~80%RH (Non-condensing)
	Vibration acceleration	Less than 4.9m/s² (0.5G)
	Others	Free from explosive or corrosive gas and liquid. Free from dust, oil or water. Free from electrical noise.
Power Requirements		4.0KVA

SI units are used in this table
However, gravitational units are used in Repeatability is conformed to ISO 9283.
*1: The range of motion of B-axis is an angle to the ground.
But an angle of motion may be restricted by the relative angle with upper arms.



View A

SIZE A3