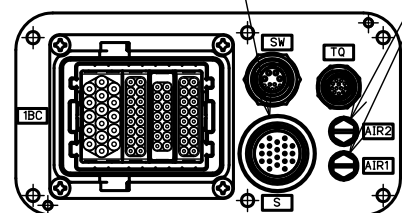


DWG.NO. HW1385223

Attachment recommended range
(Out of range, please be aware of the interference.)

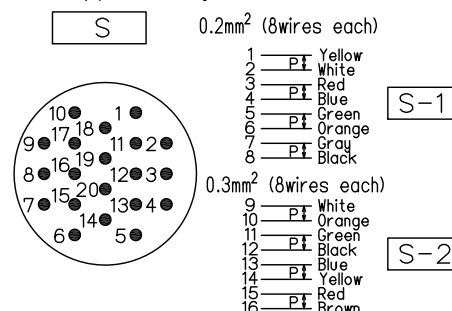
Reserved Cable Connector
RM21WTR-20P*HIROSE*
Mating connector is
RM21WTP-20S*HIROSE*

2x Air inlet
(Tapped hole M5, Pitch: 0.8)
2x LP-M5 (pipe plug)

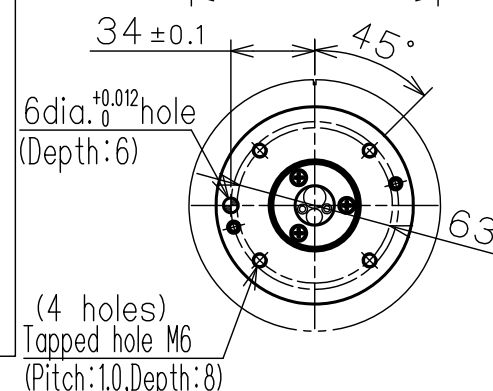


View C (Scale=1/3)

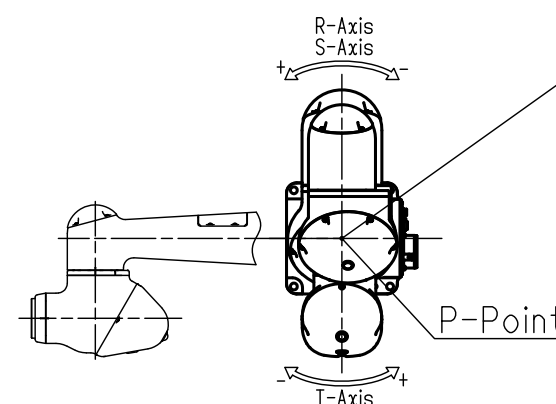
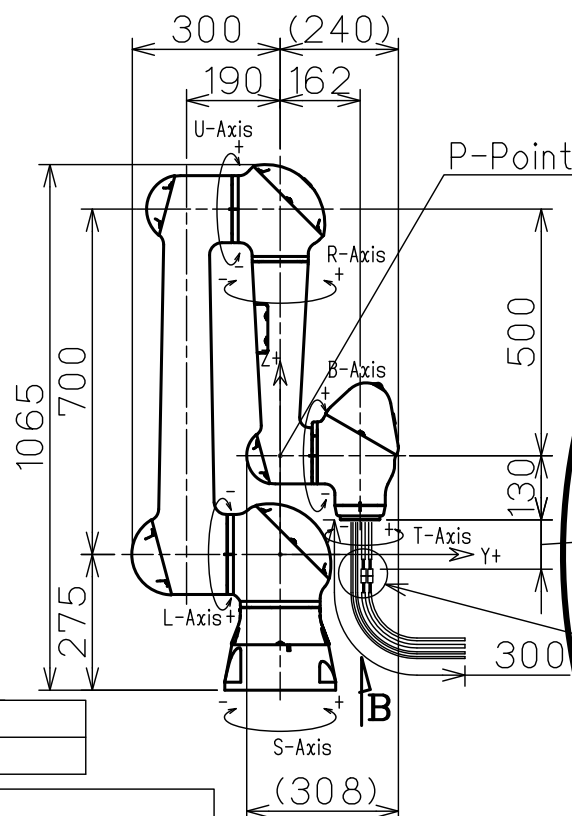
Details for equipment of wiring connectors use number



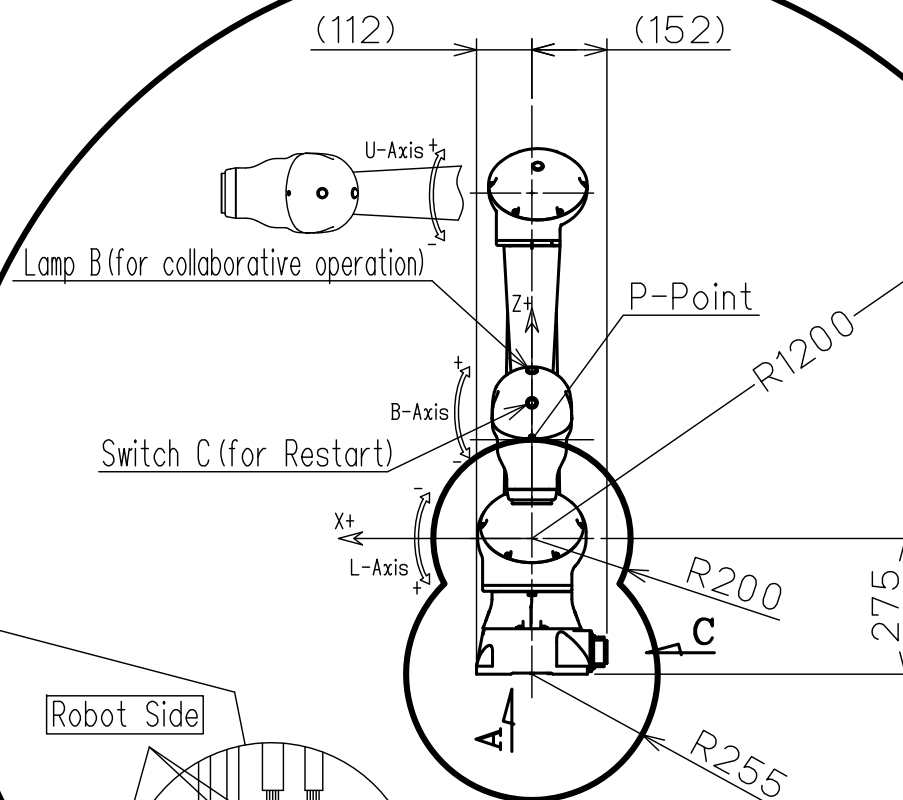
The figure above shows the state viewed from the fitting side of the manipulator side of the connector.
(connection side of the mating connector)



View B (Scale=1/3)



P-Point Maximum Envelope



Robot Side

Tool Side

2x Connectors for internal user I/O wiring harness: 51216-0800

2x Connectors for internal user I/O wiring harness: 51227-0800

AIR1 (Red)
AIR2 (Blue)

2x Air Tubes
(Outside dia. 4mm)

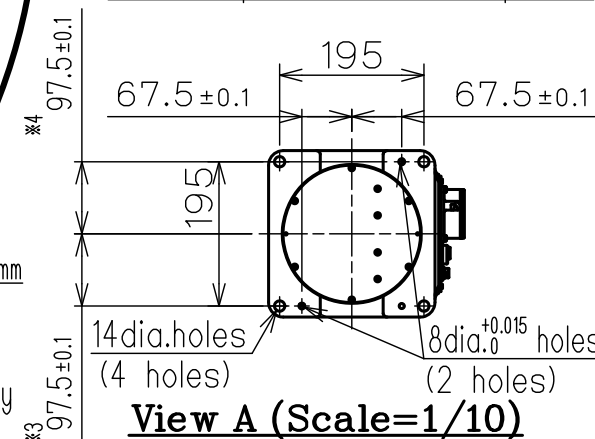
Connector Details

*3. Tolerance shall be applied only for 8 dia. $^{+0.015}_{-0}$ holes.

Units: mm

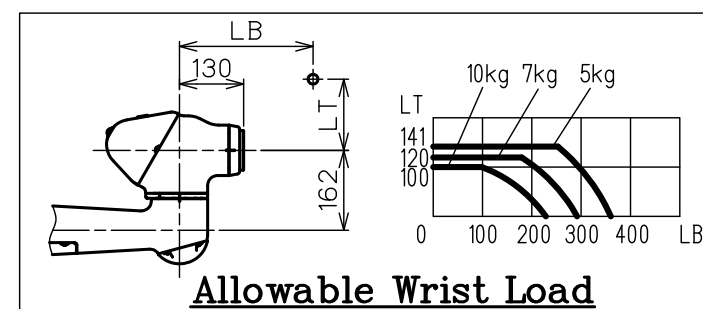
Item	Model	Collaborative Robot MOTOMAN-HC10
Configuration		Vertically Articulated
Degree of Freedom		6
Payload		10kg
Repeatability *1		±0.1mm
Range of motion	S-Axis (Turning)	-180° - +180°
	L-Axis (Lower Arm)	-180° - +180°
	U-Axis (Upper Arm)	-5° - +355°
	R-Axis (Roll)	-180° - +180°
	B-Axis (Pitch/Yaw)	-180° - +180°
Maximum speed	T-Axis (Twist)	-180° - +180°
	S-Axis	2.27rad/s, 130°/s
	L-Axis	2.27rad/s, 130°/s
	U-Axis	3.14rad/s, 180°/s
	R-Axis	3.14rad/s, 180°/s
Allowable Moment	B-Axis	4.36rad/s, 250°/s
	T-Axis	4.36rad/s, 250°/s
	R-Axis	27.4N·m (2.8kgf·m)
Allowable Inertia (GD ² /4)	B-Axis	27.4N·m (2.8kgf·m)
	T-Axis	9.8N·m (1.0kgf·m)
	R-Axis	0.78 kg·m ²
Approx. Robot mass		47kg
Protected structure		All axes: IP20
Mounting method		Floor-mounted, Wall-mounted, Tilt-mounted, Ceiling-mounted
Ambient Conditions	Temperature	0 to 40 °C
	Humidity	20 to 80%RH (Non-Condensing)
	Vibration	Less than 4.9m/s ² (0.5G)
	Altitude	1000m or less
Others		•Free from explosive or corrosive gas and liquid.
		•Free from dust, oil, of water.
		•Free from electrical noise.
		•Free from Strong magnetic fields.
Power Requirements		1.0kVA
Controller		YRC1000/YRC1000micro

SI units are used in this table.
However, gravitational unit is used in ().
*1 Conformed to ISO9283
*2 The manipulator is in the home position.



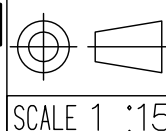
View A (Scale=1/10)

Type	Note
YR-1-06VXHC10-A00	-



Note:
1. All rights reserved.
2. Please note that the data is subject to be deleted without advance notice.
3. No warranty is given in relation to the data including the specification.
4. We are not responsible for any damages or loss caused by the use of the data.

FOR STUDY PURPOSE ONLY



YASKAWA
株式会社 安川電機

Reference Drawing

TITLE MOTOMAN-HC10
DIMENSION DIAGRAM

DRWN DATE Apr. 14. '17
DWG.NO. HW1385223

SIZE A3